



**CHRIST**  
BAPTIST CHURCH

# Children's Church

Kindergarten – 3<sup>rd</sup> Grade



LOVING



GROWING

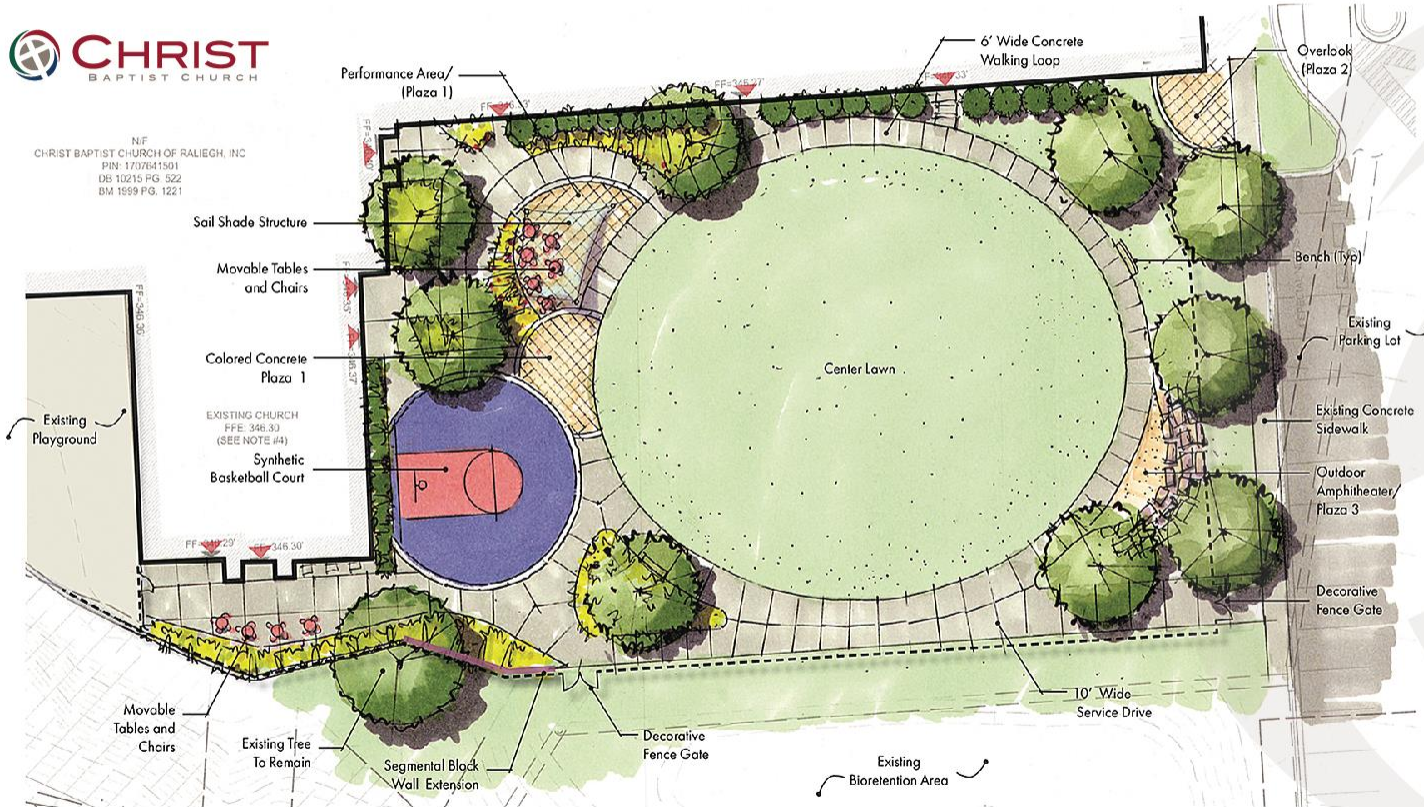


SENDING

# FAMILY RECREATION AREA



NF  
CHRIST BAPTIST CHURCH OF RALIEGH, NC  
PIN: 1737641501  
DB 10215 PG. 522  
BM 1559 PG. 1221



**3**  
Weeks  
Remaining

Goal:  
**\$300,000**

Donations  
Received  
To Date:  
**\$106,834**



LIVING IN  
**GOD'S**  
*Presence*

PSALMS

**Our Faithful Servant King**

Psalm 3

# Psalms

Psalm 1

Psalm 2

Psalm 3 – Our Faithful Servant King

Psalm 4 (August 18)

# Our Faithful Servant King

LIVING IN  
GOD'S  
*Presence*

## A Faithful Servant

- doesn't *wallow in*, but *walks through* suffering
- has a deep & abiding trust in God
- identifies with & intercedes for God's people

PSALMS

# Our Faithful Servant King

## A Faithful Servant

- doesn't *wallow in*, but *walks through* suffering
- has a deep & abiding trust in God
- identifies with & intercedes for God's people

## The Faithful King

# Our Faithful Servant King

## A Faithful Servant

- doesn't *wallow in*, but *walks through* suffering
- has a deep & abiding trust in God
- identifies with & intercedes for God's people

## The Faithful King

- Jesus walked through suffering

# Our Faithful Servant King

## A Faithful Servant

- doesn't *wallow in*, but *walks through* suffering
- has a deep & abiding trust in God
- identifies with & intercedes for God's people

## The Faithful King

- Jesus walked through suffering
- Jesus had an abiding trust in God the Father



# Our Faithful Servant King

## A Faithful Servant

- doesn't *wallow in*, but *walks through* suffering
- has a deep & abiding trust in God
- identifies with & intercedes for God's people

## The Faithful King

- Jesus walked through suffering
- Jesus had an abiding trust in God the Father
- Jesus identifies with & intercedes for God's people